



# MONTHLY MEMBERSHIP PROGRESS REPORT

District 3234H1

Results as of: 10/31/2017

GMT: JAYESH THAKKAR

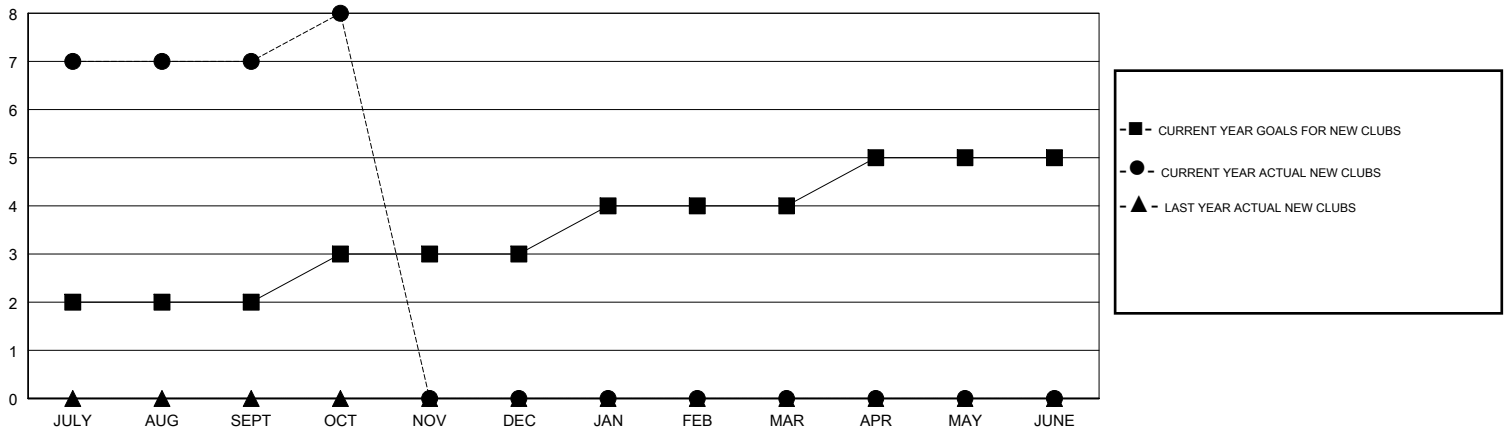
LOCATION INDIA

GMT CA

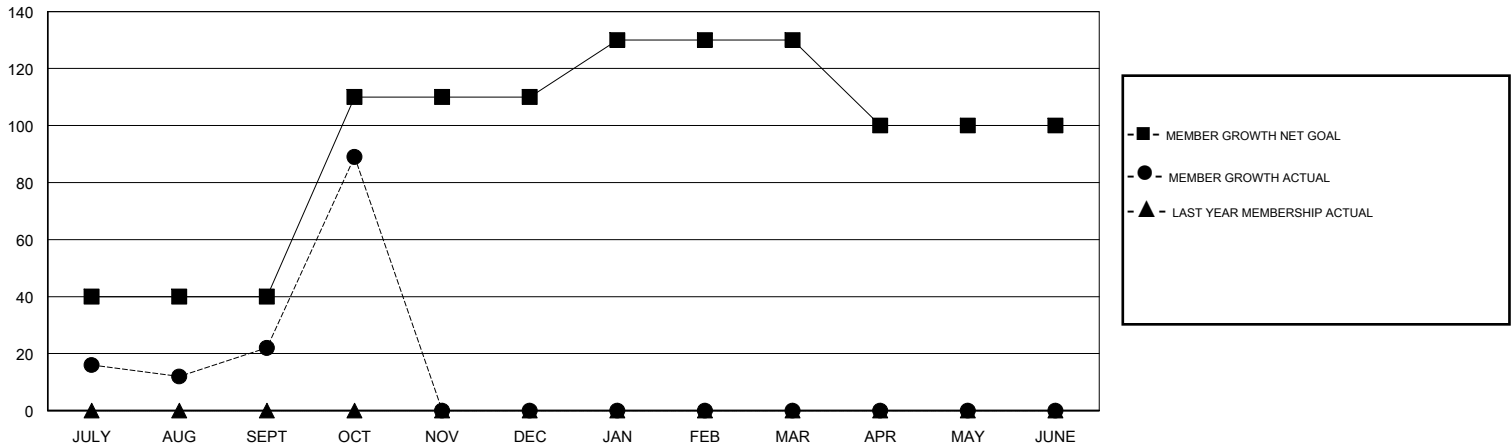
| Clubs                 |               |           |               |
|-----------------------|---------------|-----------|---------------|
| RESULTS FOR 2017-2018 |               |           |               |
| QUARTER               | NEW CLUB GOAL | NEW CLUBS | DROPPED CLUBS |
| JULY/AUG/SEPT         | 2             | 7         | 1             |
| OCT/NOV/DEC           | 1             | 1         | 0             |
| JAN/FEB/MAR           | 1             | 0         | 0             |
| APR/MAY/JUNE          | 1             | 0         | 0             |

| Members               |                        |                      |  |
|-----------------------|------------------------|----------------------|--|
| RESULTS FOR 2017-2018 |                        |                      |  |
| QUARTER               | MEMBER GROWTH NET GOAL | MEMBER GROWTH ACTUAL | DROPPED MEMBERS ACTUAL (including transfers) |
| JULY/AUG/SEPT         | 40                     | 192                  | 163  |
| OCT/NOV/DEC           | 70                     | 92                   | 11   |
| JAN/FEB/MAR           | 20                     | 0                    | 0  |
| APR/MAY/JUNE          | -30                    | 0                    | 0  |

GOALS AND ACTUAL NEW CLUBS CUMULATIVE



GOALS AND ACTUAL MEMBERS CUMULATIVE



DROPPED CLUBS: 1

33 CLUBS OF 88 ADDED 1 OR MORE NEW MEMBERS

**GENDER DISTRIBUTION**  
 MALE 2,033 (68.41%)  
 FEMALE 939 (31.59%)  
 Women Percentage Fiscal Year Goal: 30%

| DROPPED MEMBERS |            |
|-----------------|------------|
| DECEASED        | 2          |
| CLUB CANCELLED  | 20         |
| OTHER           | 152        |
| <b>TOTAL</b>    | <b>174</b> |

[CLICK HERE FOR CUMULATIVE MEMBERSHIP DATA](#)

|                                 |       |
|---------------------------------|-------|
| TOTAL FAMILY UNIT MEMBERS       | 1,721 |
| FAMILY MEMBERS PAYING HALF DUES | 896   |